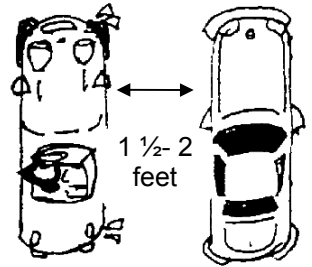


BACK BUMPER TO BUMPER

- 1
 - Approach with right turn signal on...
 - Leave about 1 ½ to 2 feet of space beside vehicles.
 - Line back bumpers up, even with one other.

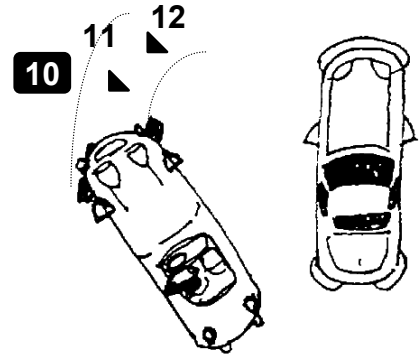
● STOP



45 ° ANGLE

- 2
 - Put vehicle in reverse.
 - Keeping foot on the brake, let the car creep back slowly.
 - Turn steering wheel hard-right, until it stops (1 ½ turns right).
 - Get car angled to 45 degrees (or the 10 o'clock position).

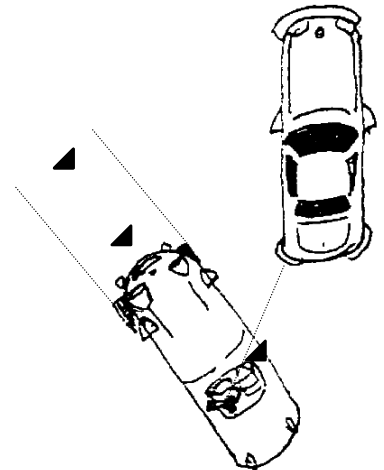
● STOP



STRAIGHT BACK

- 3
 - Keeping foot on the brake, let the car creep back slowly.
 - Turn wheel quickly (1 ½ turns to left)—back up straight.
 - Stop when the rear tail-light or bumper (of the car in front of you) is visible in the lower right corner of your windshield.

● STOP



HARD LEFT

- 4
 - Keeping foot on the brake, let the car creep back slowly.
 - Turn steering wheel hard left, all the way—back in!
 - Watch the car behind you: stop.
 - Pull forward slowly, centering your car.

PARALLEL PARKING MADE EASY ©

.....compliments of First Class Driving School

